



**DEMOCRATIC MAIL-IN BALLOT**  
**OFFICIAL PRIMARY ELECTION • JUNE 4, 2013**  
**CAPE MAY COUNTY**  
**BOROUGH OF AVALON**

BALLOT  
STYLE  
31



*Rita Marie Fulginiti*

**RITA MARIE FULGINITI**  
County Clerk

**To Protect Your Vote:**  
IT IS AGAINST THE LAW FOR ANYONE EXCEPT YOU THE VOTER TO MARK OR INSPECT THIS BALLOT. However, a family member may assist you in doing so.

**IMPORTANT**  
**INSTRUCTIONS TO**  
**VOTERS**

Please read the following before marking your ballot:

1. Use **ONLY** a pencil or ink pen (black or blue) to mark your ballot. Do not use red ink.
2. Completely fill in oval to the right of each of your selections.  
**MARK BALLOT LIKE THIS:**  
 JOHN DOE → ●
3. To write-in a name, find the office in which you want to write-in . Darken the oval by the words "write-in" under that office. Write the name of the person for which you wish to vote on the blank line. You may not write-in any name that is printed on the ballot.
4. If you tear, deface or incorrectly mark this ballot, return it to the Cape May County Clerk and obtain a new ballot.

**GOVERNOR**

FOUR YEAR TERM (VOTE FOR ONE)

**TROY WEBSTER** → ○  
DEMOCRATS FOR FORWARD PROGRESS

**BARBARA BUONO** → ○  
CAPE MAY COUNTY REGULAR DEMOCRATIC ORGANIZATION

WRITE-IN → ○

**MEMBER  
STATE SENATE**

FOUR YEAR TERM (VOTE FOR ONE)

**JEFF VAN DREW** → ○  
CAPE MAY COUNTY REGULAR DEMOCRATIC ORGANIZATION

WRITE-IN → ○

**MEMBER OF THE  
GENERAL ASSEMBLY**

TWO YEAR TERM (VOTE FOR TWO)

**NELSON ALBANO** → ○  
CAPE MAY COUNTY REGULAR DEMOCRATIC ORGANIZATION

**BOB ANDRZEJCZAK** → ○  
CAPE MAY COUNTY REGULAR DEMOCRATIC ORGANIZATION

WRITE-IN → ○

WRITE-IN → ○

**MEMBER BOARD OF  
CHOSEN FREEHOLDERS**

THREE YEAR TERM (VOTE FOR TWO)

No PETITION FILED

No PETITION FILED

WRITE-IN → ○

WRITE-IN → ○

**STATE COMMITTEE  
MALE**

FOUR YEAR TERM (VOTE FOR ONE)

No PETITION FILED

WRITE-IN → ○

**STATE COMMITTEE  
FEMALE**

FOUR YEAR TERM (VOTE FOR ONE)

No PETITION FILED

WRITE-IN → ○



**DEMOCRATIC MAIL-IN BALLOT**  
**OFFICIAL PRIMARY ELECTION • JUNE 4, 2013**  
**CAPE MAY COUNTY**  
**CITY OF CAPE MAY**

BALLOT  
 STYLE  
 32



*Rita Marie Fulginiti*

**RITA MARIE FULGINITI**  
 County Clerk

**To Protect Your Vote:**  
 IT IS AGAINST THE LAW FOR ANYONE EXCEPT YOU  
 THE VOTER TO MARK OR INSPECT THIS BALLOT.  
 However, a family member may assist you in doing so.

**IMPORTANT**  
**INSTRUCTIONS TO**  
**VOTERS**

Please read the following before marking your ballot:

1. Use **ONLY** a pencil or ink pen (black or blue) to mark your ballot. Do not use red ink.
2. Completely fill in oval to the right of each of your selections.  
 MARK BALLOT LIKE THIS:  
 JOHN DOE → ●
3. To write-in a name, find the office in which you want to write-in . Darken the oval by the words "write-in" under that office. Write the name of the person for which you wish to vote on the blank line. You may not write-in any name that is printed on the ballot.
4. If you tear, deface or incorrectly mark this ballot, return it to the Cape May County Clerk and obtain a new ballot.

**GOVERNOR**

FOUR YEAR TERM (VOTE FOR ONE)

**TROY WEBSTER** → ○  
DEMOCRATS FOR FORWARD PROGRESS

**BARBARA BUONO** → ○  
CAPE MAY COUNTY REGULAR DEMOCRATIC ORGANIZATION

WRITE-IN → ○

**MEMBER  
 STATE SENATE**

FOUR YEAR TERM (VOTE FOR ONE)

**JEFF VAN DREW** → ○  
CAPE MAY COUNTY REGULAR DEMOCRATIC ORGANIZATION

WRITE-IN → ○

**MEMBER OF THE  
 GENERAL ASSEMBLY**

TWO YEAR TERM (VOTE FOR TWO)

**NELSON ALBANO** → ○  
CAPE MAY COUNTY REGULAR DEMOCRATIC ORGANIZATION

**BOB ANDRZEJCZAK** → ○  
CAPE MAY COUNTY REGULAR DEMOCRATIC ORGANIZATION

WRITE-IN → ○

WRITE-IN → ○

**MEMBER BOARD OF  
 CHOSEN FREEHOLDERS**

THREE YEAR TERM (VOTE FOR TWO)

No PETITION FILED

No PETITION FILED

WRITE-IN → ○

WRITE-IN → ○

**STATE COMMITTEE  
 MALE**

FOUR YEAR TERM (VOTE FOR ONE)

No PETITION FILED

WRITE-IN → ○

**STATE COMMITTEE  
 FEMALE**

FOUR YEAR TERM (VOTE FOR ONE)

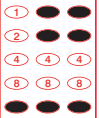
No PETITION FILED

WRITE-IN → ○



**DEMOCRATIC MAIL-IN BALLOT**  
**OFFICIAL PRIMARY ELECTION • JUNE 4, 2013**  
**CAPE MAY COUNTY**  
**BOROUGH OF CAPE MAY POINT**

BALLOT  
 STYLE  
 33



*Rita Marie Fulginiti*

**RITA MARIE FULGINITI**  
 County Clerk

**To Protect Your Vote:**  
 IT IS AGAINST THE LAW FOR ANYONE EXCEPT YOU  
 THE VOTER TO MARK OR INSPECT THIS BALLOT.  
 However, a family member may assist you in doing so.

**IMPORTANT**  
**INSTRUCTIONS TO**  
**VOTERS**

Please read the following before marking your ballot:

1. Use **ONLY** a pencil or ink pen (black or blue) to mark your ballot. Do not use red ink.
2. Completely fill in oval to the right of each of your selections.  
 MARK BALLOT LIKE THIS:  
 JOHN DOE → ●
3. To write-in a name, find the office in which you want to write-in . Darken the oval by the words "write-in" under that office. Write the name of the person for which you wish to vote on the blank line. You may not write-in any name that is printed on the ballot.
4. If you tear, deface or incorrectly mark this ballot, return it to the Cape May County Clerk and obtain a new ballot.

**GOVERNOR**

FOUR YEAR TERM (VOTE FOR ONE)

**TROY WEBSTER** → ○  
DEMOCRATS FOR FORWARD PROGRESS

**BARBARA BUONO** → ○  
CAPE MAY COUNTY REGULAR DEMOCRATIC ORGANIZATION

WRITE-IN → ○

**MEMBER  
 STATE SENATE**

FOUR YEAR TERM (VOTE FOR ONE)

**JEFF VAN DREW** → ○  
CAPE MAY COUNTY REGULAR DEMOCRATIC ORGANIZATION

WRITE-IN → ○

**MEMBER OF THE  
 GENERAL ASSEMBLY**

TWO YEAR TERM (VOTE FOR TWO)

**NELSON ALBANO** → ○  
CAPE MAY COUNTY REGULAR DEMOCRATIC ORGANIZATION

**BOB ANDRZEJCZAK** → ○  
CAPE MAY COUNTY REGULAR DEMOCRATIC ORGANIZATION

WRITE-IN → ○

WRITE-IN → ○

**MEMBER BOARD OF  
 CHOSEN FREEHOLDERS**

THREE YEAR TERM (VOTE FOR TWO)

No PETITION FILED

No PETITION FILED

WRITE-IN → ○

WRITE-IN → ○

**STATE COMMITTEE  
 MALE**

FOUR YEAR TERM (VOTE FOR ONE)

No PETITION FILED

WRITE-IN → ○

**STATE COMMITTEE  
 FEMALE**

FOUR YEAR TERM (VOTE FOR ONE)

No PETITION FILED

WRITE-IN → ○



**DEMOCRATIC MAIL-IN BALLOT**  
**OFFICIAL PRIMARY ELECTION • JUNE 4, 2013**  
**CAPE MAY COUNTY**  
**TOWNSHIP OF DENNIS**

BALLOT  
 STYLE  
 34



*Rita Marie Fulginiti*

**RITA MARIE FULGINITI**  
 County Clerk

**To Protect Your Vote:**  
 IT IS AGAINST THE LAW FOR ANYONE EXCEPT YOU  
 THE VOTER TO MARK OR INSPECT THIS BALLOT.  
 However, a family member may assist you in doing so.

**IMPORTANT**  
**INSTRUCTIONS TO**  
**VOTERS**

Please read the following before marking your ballot:

1. Use **ONLY** a pencil or ink pen (black or blue) to mark your ballot. Do not use red ink.
2. Completely fill in oval to the right of each of your selections.  
**MARK BALLOT LIKE THIS:**  
 JOHN DOE → ●
3. To write-in a name, find the office in which you want to write-in . Darken the oval by the words "write-in" under that office. Write the name of the person for which you wish to vote on the blank line. You may not write-in any name that is printed on the ballot.
4. If you tear, deface or incorrectly mark this ballot, return it to the Cape May County Clerk and obtain a new ballot.

**GOVERNOR**

FOUR YEAR TERM (VOTE FOR ONE)

**TROY WEBSTER** → ○  
DEMOCRATS FOR FORWARD PROGRESS

**BARBARA BUONO** → ○  
CAPE MAY COUNTY REGULAR DEMOCRATIC ORGANIZATION

WRITE-IN → ○

**MEMBER  
 STATE SENATE**

FOUR YEAR TERM (VOTE FOR ONE)

**JEFF VAN DREW** → ○  
CAPE MAY COUNTY REGULAR DEMOCRATIC ORGANIZATION

WRITE-IN → ○

**MEMBER OF THE  
 GENERAL ASSEMBLY**

TWO YEAR TERM (VOTE FOR TWO)

**NELSON ALBANO** → ○  
CAPE MAY COUNTY REGULAR DEMOCRATIC ORGANIZATION

**BOB ANDRZEJCZAK** → ○  
CAPE MAY COUNTY REGULAR DEMOCRATIC ORGANIZATION

WRITE-IN → ○

WRITE-IN → ○

**MEMBER BOARD OF  
 CHOSEN FREEHOLDERS**

THREE YEAR TERM (VOTE FOR TWO)

No PETITION FILED

No PETITION FILED

WRITE-IN → ○

WRITE-IN → ○

**STATE COMMITTEE  
 MALE**

FOUR YEAR TERM (VOTE FOR ONE)

No PETITION FILED

WRITE-IN → ○

**STATE COMMITTEE  
 FEMALE**

FOUR YEAR TERM (VOTE FOR ONE)

No PETITION FILED

WRITE-IN → ○

**MEMBER  
 TOWNSHIP COMMITTEE**

THREE YEAR TERM (VOTE FOR TWO)

**JOHN MURPHY** → ○  
CAPE MAY COUNTY REGULAR DEMOCRATIC ORGANIZATION

**BRIAN O'CONNOR** → ○  
CAPE MAY COUNTY REGULAR DEMOCRATIC ORGANIZATION

WRITE-IN → ○

WRITE-IN → ○



**DEMOCRATIC MAIL-IN BALLOT**  
**OFFICIAL PRIMARY ELECTION • JUNE 4, 2013**  
**CAPE MAY COUNTY**  
**TOWNSHIP OF LOWER • WARD ONE**

BALLOT  
 STYLE  
 35



*Rita Marie Fulginiti*

**RITA MARIE FULGINITI**  
 County Clerk

**To Protect Your Vote:**  
 IT IS AGAINST THE LAW FOR ANYONE EXCEPT YOU  
 THE VOTER TO MARK OR INSPECT THIS BALLOT.  
 However, a family member may assist you in doing so.

**IMPORTANT**  
**INSTRUCTIONS TO**  
**VOTERS**

Please read the following before marking your ballot:

1. Use **ONLY** a pencil or ink pen (black or blue) to mark your ballot. Do not use red ink.
2. Completely fill in oval to the right of each of your selections.  
 MARK BALLOT LIKE THIS:  
 JOHN DOE → ●
3. To write-in a name, find the office in which you want to write-in . Darken the oval by the words "write-in" under that office. Write the name of the person for which you wish to vote on the blank line. You may not write-in any name that is printed on the ballot.
4. If you tear, deface or incorrectly mark this ballot, return it to the Cape May County Clerk and obtain a new ballot.

**GOVERNOR**

FOUR YEAR TERM (VOTE FOR ONE)

**TROY WEBSTER** → ○  
DEMOCRATS FOR FORWARD PROGRESS

**BARBARA BUONO** → ○  
CAPE MAY COUNTY REGULAR DEMOCRATIC ORGANIZATION

WRITE-IN → ○

**MEMBER  
 STATE SENATE**

FOUR YEAR TERM (VOTE FOR ONE)

**JEFF VAN DREW** → ○  
CAPE MAY COUNTY REGULAR DEMOCRATIC ORGANIZATION

WRITE-IN → ○

**MEMBER OF THE  
 GENERAL ASSEMBLY**

TWO YEAR TERM (VOTE FOR TWO)

**NELSON ALBANO** → ○  
CAPE MAY COUNTY REGULAR DEMOCRATIC ORGANIZATION

**BOB ANDRZEJCZAK** → ○  
CAPE MAY COUNTY REGULAR DEMOCRATIC ORGANIZATION

WRITE-IN → ○

WRITE-IN → ○

**MEMBER BOARD OF  
 CHOSEN FREEHOLDERS**

THREE YEAR TERM (VOTE FOR TWO)

No PETITION FILED

No PETITION FILED

WRITE-IN → ○

WRITE-IN → ○

**STATE COMMITTEE  
 MALE**

FOUR YEAR TERM (VOTE FOR ONE)

No PETITION FILED

WRITE-IN → ○

**STATE COMMITTEE  
 FEMALE**

FOUR YEAR TERM (VOTE FOR ONE)

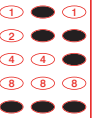
No PETITION FILED

WRITE-IN → ○



**DEMOCRATIC MAIL-IN BALLOT**  
**OFFICIAL PRIMARY ELECTION • JUNE 4, 2013**  
**CAPE MAY COUNTY**  
**TOWNSHIP OF LOWER • WARD TWO**

BALLOT  
 STYLE  
 36



*Rita Marie Fulginiti*

**RITA MARIE FULGINITI**  
 County Clerk

**To Protect Your Vote:**  
 IT IS AGAINST THE LAW FOR ANYONE EXCEPT YOU  
 THE VOTER TO MARK OR INSPECT THIS BALLOT.  
 However, a family member may assist you in doing so.

**IMPORTANT**  
**INSTRUCTIONS TO**  
**VOTERS**

Please read the following before marking your ballot:

1. Use **ONLY** a pencil or ink pen (black or blue) to mark your ballot. Do not use red ink.
2. Completely fill in oval to the right of each of your selections.  
 MARK BALLOT LIKE THIS:  
 JOHN DOE → ●
3. To write-in a name, find the office in which you want to write-in . Darken the oval by the words "write-in" under that office. Write the name of the person for which you wish to vote on the blank line. You may not write-in any name that is printed on the ballot.
4. If you tear, deface or incorrectly mark this ballot, return it to the Cape May County Clerk and obtain a new ballot.

**GOVERNOR**

FOUR YEAR TERM (VOTE FOR ONE)

**TROY WEBSTER** → ○  
DEMOCRATS FOR FORWARD PROGRESS

**BARBARA BUONO** → ○  
CAPE MAY COUNTY REGULAR DEMOCRATIC ORGANIZATION

WRITE-IN → ○

**MEMBER  
 STATE SENATE**

FOUR YEAR TERM (VOTE FOR ONE)

**JEFF VAN DREW** → ○  
CAPE MAY COUNTY REGULAR DEMOCRATIC ORGANIZATION

WRITE-IN → ○

**MEMBER OF THE  
 GENERAL ASSEMBLY**

TWO YEAR TERM (VOTE FOR TWO)

**NELSON ALBANO** → ○  
CAPE MAY COUNTY REGULAR DEMOCRATIC ORGANIZATION

**BOB ANDRZEJCZAK** → ○  
CAPE MAY COUNTY REGULAR DEMOCRATIC ORGANIZATION

WRITE-IN → ○

WRITE-IN → ○

**MEMBER BOARD OF  
 CHOSEN FREEHOLDERS**

THREE YEAR TERM (VOTE FOR TWO)

No PETITION FILED

No PETITION FILED

WRITE-IN → ○

WRITE-IN → ○

**STATE COMMITTEE  
 MALE**

FOUR YEAR TERM (VOTE FOR ONE)

No PETITION FILED

WRITE-IN → ○

**STATE COMMITTEE  
 FEMALE**

FOUR YEAR TERM (VOTE FOR ONE)

No PETITION FILED

WRITE-IN → ○



**DEMOCRATIC MAIL-IN BALLOT**  
**OFFICIAL PRIMARY ELECTION • JUNE 4, 2013**  
**CAPE MAY COUNTY**  
**TOWNSHIP OF LOWER • WARD THREE**

BALLOT  
STYLE  
37



*Rita Marie Fulginiti*

**RITA MARIE FULGINITI**  
County Clerk

**To Protect Your Vote:**  
IT IS AGAINST THE LAW FOR ANYONE EXCEPT YOU THE VOTER TO MARK OR INSPECT THIS BALLOT. However, a family member may assist you in doing so.

**IMPORTANT**  
**INSTRUCTIONS TO**  
**VOTERS**

Please read the following before marking your ballot:

1. Use **ONLY** a pencil or ink pen (black or blue) to mark your ballot. Do not use red ink.
2. Completely fill in oval to the right of each of your selections.  
**MARK BALLOT LIKE THIS:**  
 JOHN DOE → ●
3. To write-in a name, find the office in which you want to write-in . Darken the oval by the words "write-in" under that office. Write the name of the person for which you wish to vote on the blank line. You may not write-in any name that is printed on the ballot.
4. If you tear, deface or incorrectly mark this ballot, return it to the Cape May County Clerk and obtain a new ballot.

**GOVERNOR**

FOUR YEAR TERM (VOTE FOR ONE)

**TROY WEBSTER** → ○  
DEMOCRATS FOR FORWARD PROGRESS

**BARBARA BUONO** → ○  
CAPE MAY COUNTY REGULAR DEMOCRATIC ORGANIZATION

WRITE-IN → ○

**MEMBER  
STATE SENATE**

FOUR YEAR TERM (VOTE FOR ONE)

**JEFF VAN DREW** → ○  
CAPE MAY COUNTY REGULAR DEMOCRATIC ORGANIZATION

WRITE-IN → ○

**MEMBER OF THE  
GENERAL ASSEMBLY**

TWO YEAR TERM (VOTE FOR TWO)

**NELSON ALBANO** → ○  
CAPE MAY COUNTY REGULAR DEMOCRATIC ORGANIZATION

**BOB ANDRZEJCZAK** → ○  
CAPE MAY COUNTY REGULAR DEMOCRATIC ORGANIZATION

WRITE-IN → ○

WRITE-IN → ○

**MEMBER BOARD OF  
CHOSEN FREEHOLDERS**

THREE YEAR TERM (VOTE FOR TWO)

No PETITION FILED

No PETITION FILED

WRITE-IN → ○

WRITE-IN → ○

**STATE COMMITTEE  
MALE**

FOUR YEAR TERM (VOTE FOR ONE)

No PETITION FILED

WRITE-IN → ○

**STATE COMMITTEE  
FEMALE**

FOUR YEAR TERM (VOTE FOR ONE)

No PETITION FILED

WRITE-IN → ○



**DEMOCRATIC MAIL-IN BALLOT**  
**OFFICIAL PRIMARY ELECTION • JUNE 4, 2013**  
**CAPE MAY COUNTY**  
**TOWNSHIP OF MIDDLE**

BALLOT  
 STYLE  
 38

① ● ①  
 ② ● ②  
 ④ ● ④  
 ⑧ ● ⑧  
 ● ● P

*Rita Marie Fulginiti*

**RITA MARIE FULGINITI**  
 County Clerk

**To Protect Your Vote:**  
 IT IS AGAINST THE LAW FOR ANYONE EXCEPT YOU  
 THE VOTER TO MARK OR INSPECT THIS BALLOT.  
 However, a family member may assist you in doing so.

**IMPORTANT**  
**INSTRUCTIONS TO**  
**VOTERS**

Please read the following before marking your ballot:

1. Use **ONLY** a pencil or ink pen (black or blue) to mark your ballot. Do not use red ink.
2. Completely fill in oval to the right of each of your selections.  
 MARK BALLOT LIKE THIS:  
 JOHN DOE → ●
3. To write-in a name, find the office in which you want to write-in . Darken the oval by the words "write-in" under that office. Write the name of the person for which you wish to vote on the blank line. You may not write-in any name that is printed on the ballot.
4. If you tear, deface or incorrectly mark this ballot, return it to the Cape May County Clerk and obtain a new ballot.

**GOVERNOR**  
 FOUR YEAR TERM (VOTE FOR ONE)

**TROY WEBSTER** → ○  
DEMOCRATS FOR FORWARD PROGRESS

**BARBARA BUONO** → ○  
CAPE MAY COUNTY REGULAR DEMOCRATIC ORGANIZATION

WRITE-IN → ○

**MEMBER STATE SENATE**  
 FOUR YEAR TERM (VOTE FOR ONE)

**JEFF VAN DREW** → ○  
CAPE MAY COUNTY REGULAR DEMOCRATIC ORGANIZATION

WRITE-IN → ○

**MEMBER OF THE GENERAL ASSEMBLY**  
 TWO YEAR TERM (VOTE FOR TWO)

**NELSON ALBANO** → ○  
CAPE MAY COUNTY REGULAR DEMOCRATIC ORGANIZATION

**BOB ANDRZEJCZAK** → ○  
CAPE MAY COUNTY REGULAR DEMOCRATIC ORGANIZATION

WRITE-IN → ○

WRITE-IN → ○

**MEMBER BOARD OF CHOSEN FREEHOLDERS**  
 THREE YEAR TERM (VOTE FOR TWO)

No PETITION FILED

No PETITION FILED

WRITE-IN → ○

WRITE-IN → ○

**STATE COMMITTEE MALE**  
 FOUR YEAR TERM (VOTE FOR ONE)

No PETITION FILED

WRITE-IN → ○

**STATE COMMITTEE FEMALE**  
 FOUR YEAR TERM (VOTE FOR ONE)

No PETITION FILED

WRITE-IN → ○

**MEMBER TOWNSHIP COMMITTEE**  
 THREE YEAR TERM (VOTE FOR ONE)

**MICHAEL J. CLARK** → ○  
CAPE MAY COUNTY REGULAR DEMOCRATIC ORGANIZATION

**SALVATORE DESIMONE** → ○  
DEMOCRATIC CHANGE FOR MIDDLE TOWNSHIP

WRITE-IN → ○





**DEMOCRATIC MAIL-IN BALLOT**  
**OFFICIAL PRIMARY ELECTION • JUNE 4, 2013**  
**CAPE MAY COUNTY**  
**CITY OF NORTH WILDWOOD • 1st WARD**

BALLOT  
STYLE  
39



*Rita Marie Fulginiti*

**RITA MARIE FULGINITI**  
County Clerk

**To Protect Your Vote:**  
IT IS AGAINST THE LAW FOR ANYONE EXCEPT YOU THE VOTER TO MARK OR INSPECT THIS BALLOT. However, a family member may assist you in doing so.

**IMPORTANT**  
**INSTRUCTIONS TO**  
**VOTERS**

Please read the following before marking your ballot:

1. Use **ONLY** a pencil or ink pen (black or blue) to mark your ballot. Do not use red ink.
2. Completely fill in oval to the right of each of your selections.  
MARK BALLOT LIKE THIS:  
JOHN DOE → ●
3. To write-in a name, find the office in which you want to write-in . Darken the oval by the words "write-in" under that office. Write the name of the person for which you wish to vote on the blank line. You may not write-in any name that is printed on the ballot.
4. If you tear, deface or incorrectly mark this ballot, return it to the Cape May County Clerk and obtain a new ballot.

**GOVERNOR**  
FOUR YEAR TERM (VOTE FOR ONE)

**TROY WEBSTER** → ○  
DEMOCRATS FOR FORWARD PROGRESS

**BARBARA BUONO** → ○  
CAPE MAY COUNTY REGULAR DEMOCRATIC ORGANIZATION

WRITE-IN → ○

**MEMBER STATE SENATE**  
FOUR YEAR TERM (VOTE FOR ONE)

**JEFF VAN DREW** → ○  
CAPE MAY COUNTY REGULAR DEMOCRATIC ORGANIZATION

WRITE-IN → ○

**MEMBER OF THE GENERAL ASSEMBLY**  
TWO YEAR TERM (VOTE FOR TWO)

**NELSON ALBANO** → ○  
CAPE MAY COUNTY REGULAR DEMOCRATIC ORGANIZATION

**BOB ANDRZEJCZAK** → ○  
CAPE MAY COUNTY REGULAR DEMOCRATIC ORGANIZATION

WRITE-IN → ○

WRITE-IN → ○

**MEMBER BOARD OF CHOSEN FREEHOLDERS**  
THREE YEAR TERM (VOTE FOR TWO)

No PETITION FILED

No PETITION FILED

WRITE-IN → ○

WRITE-IN → ○

**STATE COMMITTEE MALE**  
FOUR YEAR TERM (VOTE FOR ONE)

No PETITION FILED

WRITE-IN → ○

**STATE COMMITTEE FEMALE**  
FOUR YEAR TERM (VOTE FOR ONE)

No PETITION FILED

WRITE-IN → ○

**MAYOR**  
FOUR YEAR TERM (VOTE FOR ONE)

No PETITION FILED

WRITE-IN → ○

**MEMBER COUNCIL-AT-LARGE**  
TWO YEAR TERM (VOTE FOR ONE)

No PETITION FILED

WRITE-IN → ○

**MEMBER COUNCIL 1ST WARD**  
THREE YEAR TERM (VOTE FOR ONE)

No PETITION FILED

WRITE-IN → ○



**DEMOCRATIC MAIL-IN BALLOT**  
**OFFICIAL PRIMARY ELECTION • JUNE 4, 2013**  
**CAPE MAY COUNTY**  
**CITY OF NORTH WILDWOOD • 2nd WARD**

BALLOT  
 STYLE  
 40  
 1 1 1  
 2 2 2  
 4 4 4  
 8 8 8  
 P P P

*Rita Marie Fulginiti*

**RITA MARIE FULGINITI**  
 County Clerk

**To Protect Your Vote:**  
 IT IS AGAINST THE LAW FOR ANYONE EXCEPT YOU  
 THE VOTER TO MARK OR INSPECT THIS BALLOT.  
 However, a family member may assist you in doing so.

**IMPORTANT**  
**INSTRUCTIONS TO**  
**VOTERS**

Please read the following before marking your ballot:

1. Use **ONLY** a pencil or ink pen (black or blue) to mark your ballot. Do not use red ink.
2. Completely fill in oval to the right of each of your selections.  
 MARK BALLOT LIKE THIS:  
 JOHN DOE → ●
3. To write-in a name, find the office in which you want to write-in . Darken the oval by the words "write-in" under that office. Write the name of the person for which you wish to vote on the blank line. You may not write-in any name that is printed on the ballot.
4. If you tear, deface or incorrectly mark this ballot, return it to the Cape May County Clerk and obtain a new ballot.

**GOVERNOR**  
 FOUR YEAR TERM (VOTE FOR ONE)

**TROY WEBSTER** → ○  
DEMOCRATS FOR FORWARD PROGRESS

**BARBARA BUONO** → ○  
CAPE MAY COUNTY REGULAR DEMOCRATIC ORGANIZATION

WRITE-IN → ○

**MEMBER STATE SENATE**  
 FOUR YEAR TERM (VOTE FOR ONE)

**JEFF VAN DREW** → ○  
CAPE MAY COUNTY REGULAR DEMOCRATIC ORGANIZATION

WRITE-IN → ○

**MEMBER OF THE GENERAL ASSEMBLY**  
 TWO YEAR TERM (VOTE FOR TWO)

**NELSON ALBANO** → ○  
CAPE MAY COUNTY REGULAR DEMOCRATIC ORGANIZATION

**BOB ANDRZEJCZAK** → ○  
CAPE MAY COUNTY REGULAR DEMOCRATIC ORGANIZATION

WRITE-IN → ○

WRITE-IN → ○

**MEMBER BOARD OF CHOSEN FREEHOLDERS**  
 THREE YEAR TERM (VOTE FOR TWO)

No PETITION FILED

No PETITION FILED

WRITE-IN → ○

WRITE-IN → ○

**STATE COMMITTEE MALE**  
 FOUR YEAR TERM (VOTE FOR ONE)

No PETITION FILED

WRITE-IN → ○

**STATE COMMITTEE FEMALE**  
 FOUR YEAR TERM (VOTE FOR ONE)

No PETITION FILED

WRITE-IN → ○

**MAYOR**  
 FOUR YEAR TERM (VOTE FOR ONE)

No PETITION FILED

WRITE-IN → ○

**MEMBER COUNCIL-AT-LARGE**  
 TWO YEAR TERM (VOTE FOR ONE)

No PETITION FILED

WRITE-IN → ○

**MEMBER COUNCIL 2ND WARD**  
 THREE YEAR TERM (VOTE FOR ONE)

No PETITION FILED

WRITE-IN → ○



**DEMOCRATIC MAIL-IN BALLOT**  
**OFFICIAL PRIMARY ELECTION • JUNE 4, 2013**  
**CAPE MAY COUNTY**  
**CITY OF OCEAN CITY • WARD ONE**

BALLOT  
 STYLE  
 41



*Rita Marie Fulginiti*

**RITA MARIE FULGINITI**  
 County Clerk

**To Protect Your Vote:**  
 IT IS AGAINST THE LAW FOR ANYONE EXCEPT YOU  
 THE VOTER TO MARK OR INSPECT THIS BALLOT.  
 However, a family member may assist you in doing so.

**IMPORTANT**  
**INSTRUCTIONS TO**  
**VOTERS**

Please read the following before marking your ballot:

1. Use **ONLY** a pencil or ink pen (black or blue) to mark your ballot. Do not use red ink.
2. Completely fill in oval to the right of each of your selections.  
 MARK BALLOT LIKE THIS:  
 JOHN DOE → ●
3. To write-in a name, find the office in which you want to write-in . Darken the oval by the words "write-in" under that office. Write the name of the person for which you wish to vote on the blank line. You may not write-in any name that is printed on the ballot.
4. If you tear, deface or incorrectly mark this ballot, return it to the Cape May County Clerk and obtain a new ballot.

**GOVERNOR**

FOUR YEAR TERM (VOTE FOR ONE)

**TROY WEBSTER** → ○  
DEMOCRATS FOR FORWARD PROGRESS

**BARBARA BUONO** → ○  
CAPE MAY COUNTY REGULAR DEMOCRATIC ORGANIZATION

WRITE-IN → ○

**MEMBER  
 STATE SENATE**

FOUR YEAR TERM (VOTE FOR ONE)

**JEFF VAN DREW** → ○  
CAPE MAY COUNTY REGULAR DEMOCRATIC ORGANIZATION

WRITE-IN → ○

**MEMBER OF THE  
 GENERAL ASSEMBLY**

TWO YEAR TERM (VOTE FOR TWO)

**NELSON ALBANO** → ○  
CAPE MAY COUNTY REGULAR DEMOCRATIC ORGANIZATION

**BOB ANDRZEJCZAK** → ○  
CAPE MAY COUNTY REGULAR DEMOCRATIC ORGANIZATION

WRITE-IN → ○

WRITE-IN → ○

**MEMBER BOARD OF  
 CHOSEN FREEHOLDERS**

THREE YEAR TERM (VOTE FOR TWO)

No PETITION FILED

No PETITION FILED

WRITE-IN → ○

WRITE-IN → ○

**STATE COMMITTEE  
 MALE**

FOUR YEAR TERM (VOTE FOR ONE)

No PETITION FILED

WRITE-IN → ○

**STATE COMMITTEE  
 FEMALE**

FOUR YEAR TERM (VOTE FOR ONE)

No PETITION FILED

WRITE-IN → ○



**DEMOCRATIC MAIL-IN BALLOT**  
**OFFICIAL PRIMARY ELECTION • JUNE 4, 2013**  
**CAPE MAY COUNTY**  
**CITY OF OCEAN CITY • WARD TWO**

BALLOT  
 STYLE  
 42



*Rita Marie Fulginiti*

**RITA MARIE FULGINITI**  
 County Clerk

**To Protect Your Vote:**  
 IT IS AGAINST THE LAW FOR ANYONE EXCEPT YOU  
 THE VOTER TO MARK OR INSPECT THIS BALLOT.  
 However, a family member may assist you in doing so.

**IMPORTANT**  
**INSTRUCTIONS TO**  
**VOTERS**

Please read the following before marking your ballot:

1. Use **ONLY** a pencil or ink pen (black or blue) to mark your ballot. Do not use red ink.
2. Completely fill in oval to the right of each of your selections.  
 MARK BALLOT LIKE THIS:  
 JOHN DOE → ●
3. To write-in a name, find the office in which you want to write-in . Darken the oval by the words "write-in" under that office. Write the name of the person for which you wish to vote on the blank line. You may not write-in any name that is printed on the ballot.
4. If you tear, deface or incorrectly mark this ballot, return it to the Cape May County Clerk and obtain a new ballot.

**GOVERNOR**

FOUR YEAR TERM (VOTE FOR ONE)

**TROY WEBSTER** → ○  
DEMOCRATS FOR FORWARD PROGRESS

**BARBARA BUONO** → ○  
CAPE MAY COUNTY REGULAR DEMOCRATIC ORGANIZATION

WRITE-IN → ○

**MEMBER  
 STATE SENATE**

FOUR YEAR TERM (VOTE FOR ONE)

**JEFF VAN DREW** → ○  
CAPE MAY COUNTY REGULAR DEMOCRATIC ORGANIZATION

WRITE-IN → ○

**MEMBER OF THE  
 GENERAL ASSEMBLY**

TWO YEAR TERM (VOTE FOR TWO)

**NELSON ALBANO** → ○  
CAPE MAY COUNTY REGULAR DEMOCRATIC ORGANIZATION

**BOB ANDRZEJCZAK** → ○  
CAPE MAY COUNTY REGULAR DEMOCRATIC ORGANIZATION

WRITE-IN → ○

WRITE-IN → ○

**MEMBER BOARD OF  
 CHOSEN FREEHOLDERS**

THREE YEAR TERM (VOTE FOR TWO)

No PETITION FILED

No PETITION FILED

WRITE-IN → ○

WRITE-IN → ○

**STATE COMMITTEE  
 MALE**

FOUR YEAR TERM (VOTE FOR ONE)

No PETITION FILED

WRITE-IN → ○

**STATE COMMITTEE  
 FEMALE**

FOUR YEAR TERM (VOTE FOR ONE)

No PETITION FILED

WRITE-IN → ○



**DEMOCRATIC MAIL-IN BALLOT**  
**OFFICIAL PRIMARY ELECTION • JUNE 4, 2013**  
**CAPE MAY COUNTY**  
**CITY OF OCEAN CITY • WARD THREE**

BALLOT  
 STYLE  
 43



*Rita Marie Fulginiti*

**RITA MARIE FULGINITI**  
 County Clerk

**To Protect Your Vote:**  
 IT IS AGAINST THE LAW FOR ANYONE EXCEPT YOU  
 THE VOTER TO MARK OR INSPECT THIS BALLOT.  
 However, a family member may assist you in doing so.

**IMPORTANT**  
**INSTRUCTIONS TO**  
**VOTERS**

Please read the following before marking your ballot:

1. Use **ONLY** a pencil or ink pen (black or blue) to mark your ballot. Do not use red ink.
2. Completely fill in oval to the right of each of your selections.  
 MARK BALLOT LIKE THIS:  
 JOHN DOE → ●
3. To write-in a name, find the office in which you want to write-in . Darken the oval by the words "write-in" under that office. Write the name of the person for which you wish to vote on the blank line. You may not write-in any name that is printed on the ballot.
4. If you tear, deface or incorrectly mark this ballot, return it to the Cape May County Clerk and obtain a new ballot.

**GOVERNOR**

FOUR YEAR TERM (VOTE FOR ONE)

**TROY WEBSTER** → ○  
DEMOCRATS FOR FORWARD PROGRESS

**BARBARA BUONO** → ○  
CAPE MAY COUNTY REGULAR DEMOCRATIC ORGANIZATION

WRITE-IN → ○

**MEMBER  
 STATE SENATE**

FOUR YEAR TERM (VOTE FOR ONE)

**JEFF VAN DREW** → ○  
CAPE MAY COUNTY REGULAR DEMOCRATIC ORGANIZATION

WRITE-IN → ○

**MEMBER OF THE  
 GENERAL ASSEMBLY**

TWO YEAR TERM (VOTE FOR TWO)

**NELSON ALBANO** → ○  
CAPE MAY COUNTY REGULAR DEMOCRATIC ORGANIZATION

**BOB ANDRZEJCZAK** → ○  
CAPE MAY COUNTY REGULAR DEMOCRATIC ORGANIZATION

WRITE-IN → ○

WRITE-IN → ○

**MEMBER BOARD OF  
 CHOSEN FREEHOLDERS**

THREE YEAR TERM (VOTE FOR TWO)

No PETITION FILED

No PETITION FILED

WRITE-IN → ○

WRITE-IN → ○

**STATE COMMITTEE  
 MALE**

FOUR YEAR TERM (VOTE FOR ONE)

No PETITION FILED

WRITE-IN → ○

**STATE COMMITTEE  
 FEMALE**

FOUR YEAR TERM (VOTE FOR ONE)

No PETITION FILED

WRITE-IN → ○



**DEMOCRATIC MAIL-IN BALLOT**  
**OFFICIAL PRIMARY ELECTION • JUNE 4, 2013**  
**CAPE MAY COUNTY**  
**CITY OF OCEAN CITY • WARD FOUR**

BALLOT  
 STYLE  
 44  
 1 1 1  
 2 2 2  
 4 ● ● ●  
 8 8 8  
 ● P P

*Rita Marie Fulginiti*

**RITA MARIE FULGINITI**  
 County Clerk

**To Protect Your Vote:**  
 IT IS AGAINST THE LAW FOR ANYONE EXCEPT YOU  
 THE VOTER TO MARK OR INSPECT THIS BALLOT.  
 However, a family member may assist you in doing so.

**IMPORTANT**  
**INSTRUCTIONS TO**  
**VOTERS**

Please read the following before marking your ballot:

1. Use **ONLY** a pencil or ink pen (black or blue) to mark your ballot. Do not use red ink.
2. Completely fill in oval to the right of each of your selections.  
 MARK BALLOT LIKE THIS:  
 JOHN DOE → ●
3. To write-in a name, find the office in which you want to write-in . Darken the oval by the words "write-in" under that office. Write the name of the person for which you wish to vote on the blank line. You may not write-in any name that is printed on the ballot.
4. If you tear, deface or incorrectly mark this ballot, return it to the Cape May County Clerk and obtain a new ballot.

**GOVERNOR**

FOUR YEAR TERM (VOTE FOR ONE)

**TROY WEBSTER** → ○  
DEMOCRATS FOR FORWARD PROGRESS

**BARBARA BUONO** → ○  
CAPE MAY COUNTY REGULAR DEMOCRATIC ORGANIZATION

WRITE-IN → ○

**MEMBER  
 STATE SENATE**

FOUR YEAR TERM (VOTE FOR ONE)

**JEFF VAN DREW** → ○  
CAPE MAY COUNTY REGULAR DEMOCRATIC ORGANIZATION

WRITE-IN → ○

**MEMBER OF THE  
 GENERAL ASSEMBLY**

TWO YEAR TERM (VOTE FOR TWO)

**NELSON ALBANO** → ○  
CAPE MAY COUNTY REGULAR DEMOCRATIC ORGANIZATION

**BOB ANDRZEJCZAK** → ○  
CAPE MAY COUNTY REGULAR DEMOCRATIC ORGANIZATION

WRITE-IN → ○

WRITE-IN → ○

**MEMBER BOARD OF  
 CHOSEN FREEHOLDERS**

THREE YEAR TERM (VOTE FOR TWO)

No PETITION FILED

No PETITION FILED

WRITE-IN → ○

WRITE-IN → ○

**STATE COMMITTEE  
 MALE**

FOUR YEAR TERM (VOTE FOR ONE)

No PETITION FILED

WRITE-IN → ○

**STATE COMMITTEE  
 FEMALE**

FOUR YEAR TERM (VOTE FOR ONE)

No PETITION FILED

WRITE-IN → ○



**DEMOCRATIC MAIL-IN BALLOT**  
**OFFICIAL PRIMARY ELECTION • JUNE 4, 2013**  
**CAPE MAY COUNTY**  
**CITY OF SEA ISLE CITY**

BALLOT  
STYLE  
45



*Rita Marie Fulginiti*

**RITA MARIE FULGINITI**  
County Clerk

**To Protect Your Vote:**  
IT IS AGAINST THE LAW FOR ANYONE EXCEPT YOU THE VOTER TO MARK OR INSPECT THIS BALLOT. However, a family member may assist you in doing so.

**IMPORTANT**  
**INSTRUCTIONS TO**  
**VOTERS**

Please read the following before marking your ballot:

1. Use **ONLY** a pencil or ink pen (black or blue) to mark your ballot. Do not use red ink.
2. Completely fill in oval to the right of each of your selections.  
**MARK BALLOT LIKE THIS:**  
 JOHN DOE → ●
3. To write-in a name, find the office in which you want to write-in . Darken the oval by the words "write-in" under that office. Write the name of the person for which you wish to vote on the blank line. You may not write-in any name that is printed on the ballot.
4. If you tear, deface or incorrectly mark this ballot, return it to the Cape May County Clerk and obtain a new ballot.

**GOVERNOR**

FOUR YEAR TERM (VOTE FOR ONE)

**TROY WEBSTER** → ○  
DEMOCRATS FOR FORWARD PROGRESS

**BARBARA BUONO** → ○  
CAPE MAY COUNTY REGULAR DEMOCRATIC ORGANIZATION

WRITE-IN → ○

**MEMBER  
STATE SENATE**

FOUR YEAR TERM (VOTE FOR ONE)

**JEFF VAN DREW** → ○  
CAPE MAY COUNTY REGULAR DEMOCRATIC ORGANIZATION

WRITE-IN → ○

**MEMBER OF THE  
GENERAL ASSEMBLY**

TWO YEAR TERM (VOTE FOR TWO)

**NELSON ALBANO** → ○  
CAPE MAY COUNTY REGULAR DEMOCRATIC ORGANIZATION

**BOB ANDRZEJCZAK** → ○  
CAPE MAY COUNTY REGULAR DEMOCRATIC ORGANIZATION

WRITE-IN → ○

WRITE-IN → ○

**MEMBER BOARD OF  
CHOSEN FREEHOLDERS**

THREE YEAR TERM (VOTE FOR TWO)

No PETITION FILED

No PETITION FILED

WRITE-IN → ○

WRITE-IN → ○

**STATE COMMITTEE  
MALE**

FOUR YEAR TERM (VOTE FOR ONE)

No PETITION FILED

WRITE-IN → ○

**STATE COMMITTEE  
FEMALE**

FOUR YEAR TERM (VOTE FOR ONE)

No PETITION FILED

WRITE-IN → ○



**DEMOCRATIC MAIL-IN BALLOT**  
**OFFICIAL PRIMARY ELECTION • JUNE 4, 2013**  
**CAPE MAY COUNTY**  
**BOROUGH OF STONE HARBOR**

BALLOT  
 STYLE  
 46



*Rita Marie Fulginiti*

**RITA MARIE FULGINITI**  
 County Clerk

**To Protect Your Vote:**  
 IT IS AGAINST THE LAW FOR ANYONE EXCEPT YOU  
 THE VOTER TO MARK OR INSPECT THIS BALLOT.  
 However, a family member may assist you in doing so.

**IMPORTANT**  
**INSTRUCTIONS TO**  
**VOTERS**

Please read the following before marking your ballot:

1. Use **ONLY** a pencil or ink pen (black or blue) to mark your ballot. Do not use red ink.
2. Completely fill in oval to the right of each of your selections.  
**MARK BALLOT LIKE THIS:**  
 JOHN DOE → ●
3. To write-in a name, find the office in which you want to write-in . Darken the oval by the words "write-in" under that office. Write the name of the person for which you wish to vote on the blank line. You may not write-in any name that is printed on the ballot.
4. If you tear, deface or incorrectly mark this ballot, return it to the Cape May County Clerk and obtain a new ballot.

**GOVERNOR**

FOUR YEAR TERM (VOTE FOR ONE)

**TROY WEBSTER** → ○  
DEMOCRATS FOR FORWARD PROGRESS

**BARBARA BUONO** → ○  
CAPE MAY COUNTY REGULAR DEMOCRATIC ORGANIZATION

WRITE-IN → ○

**MEMBER  
 STATE SENATE**

FOUR YEAR TERM (VOTE FOR ONE)

**JEFF VAN DREW** → ○  
CAPE MAY COUNTY REGULAR DEMOCRATIC ORGANIZATION

WRITE-IN → ○

**MEMBER OF THE  
 GENERAL ASSEMBLY**

TWO YEAR TERM (VOTE FOR TWO)

**NELSON ALBANO** → ○  
CAPE MAY COUNTY REGULAR DEMOCRATIC ORGANIZATION

**BOB ANDRZEJCZAK** → ○  
CAPE MAY COUNTY REGULAR DEMOCRATIC ORGANIZATION

WRITE-IN → ○

WRITE-IN → ○

**MEMBER BOARD OF  
 CHOSEN FREEHOLDERS**

THREE YEAR TERM (VOTE FOR TWO)

No PETITION FILED

No PETITION FILED

WRITE-IN → ○

WRITE-IN → ○

**STATE COMMITTEE  
 MALE**

FOUR YEAR TERM (VOTE FOR ONE)

No PETITION FILED

WRITE-IN → ○

**STATE COMMITTEE  
 FEMALE**

FOUR YEAR TERM (VOTE FOR ONE)

No PETITION FILED

WRITE-IN → ○

**MEMBER OF  
 COUNCIL**

THREE YEAR TERM (VOTE FOR TWO)

No PETITION FILED

No PETITION FILED

WRITE-IN → ○

WRITE-IN → ○





**DEMOCRATIC MAIL-IN BALLOT**  
**OFFICIAL PRIMARY ELECTION • JUNE 4, 2013**  
**CAPE MAY COUNTY**  
**TOWNSHIP OF UPPER**

BALLOT  
 STYLE  
 47



*Rita Marie Fulginiti*

**RITA MARIE FULGINITI**  
 County Clerk

**To Protect Your Vote:**  
 IT IS AGAINST THE LAW FOR ANYONE EXCEPT YOU  
 THE VOTER TO MARK OR INSPECT THIS BALLOT.  
 However, a family member may assist you in doing so.

**IMPORTANT**  
**INSTRUCTIONS TO**  
**VOTERS**

Please read the following before marking your ballot:

1. Use **ONLY** a pencil or ink pen (black or blue) to mark your ballot. Do not use red ink.
2. Completely fill in oval to the right of each of your selections.  
**MARK BALLOT LIKE THIS:**  
 JOHN DOE → ●
3. To write-in a name, find the office in which you want to write-in . Darken the oval by the words "write-in" under that office. Write the name of the person for which you wish to vote on the blank line. You may not write-in any name that is printed on the ballot.
4. If you tear, deface or incorrectly mark this ballot, return it to the Cape May County Clerk and obtain a new ballot.

**GOVERNOR**  
 FOUR YEAR TERM (VOTE FOR ONE)

**TROY WEBSTER** → ○  
DEMOCRATS FOR FORWARD PROGRESS

**BARBARA BUONO** → ○  
CAPE MAY COUNTY REGULAR DEMOCRATIC ORGANIZATION

WRITE-IN → ○

**MEMBER STATE SENATE**  
 FOUR YEAR TERM (VOTE FOR ONE)

**JEFF VAN DREW** → ○  
CAPE MAY COUNTY REGULAR DEMOCRATIC ORGANIZATION

WRITE-IN → ○

**MEMBER OF THE GENERAL ASSEMBLY**  
 TWO YEAR TERM (VOTE FOR TWO)

**NELSON ALBANO** → ○  
CAPE MAY COUNTY REGULAR DEMOCRATIC ORGANIZATION

**BOB ANDRZEJCZAK** → ○  
CAPE MAY COUNTY REGULAR DEMOCRATIC ORGANIZATION

WRITE-IN → ○

WRITE-IN → ○

**MEMBER BOARD OF CHOSEN FREEHOLDERS**  
 THREE YEAR TERM (VOTE FOR TWO)

No PETITION FILED

No PETITION FILED

WRITE-IN → ○

WRITE-IN → ○

**STATE COMMITTEE MALE**  
 FOUR YEAR TERM (VOTE FOR ONE)

No PETITION FILED

WRITE-IN → ○

**STATE COMMITTEE FEMALE**  
 FOUR YEAR TERM (VOTE FOR ONE)

No PETITION FILED

WRITE-IN → ○

**MEMBER TOWNSHIP COMMITTEE**  
 THREE YEAR TERM (VOTE FOR TWO)

No PETITION FILED

No PETITION FILED

WRITE-IN → ○

WRITE-IN → ○



**DEMOCRATIC MAIL-IN BALLOT**  
**OFFICIAL PRIMARY ELECTION • JUNE 4, 2013**  
**CAPE MAY COUNTY**  
**BOROUGH OF WEST CAPE MAY**

BALLOT  
STYLE  
48



*Rita Marie Fulginiti*

**RITA MARIE FULGINITI**  
County Clerk

**To Protect Your Vote:**  
IT IS AGAINST THE LAW FOR ANYONE EXCEPT YOU THE VOTER TO MARK OR INSPECT THIS BALLOT. However, a family member may assist you in doing so.

**IMPORTANT**  
**INSTRUCTIONS TO**  
**VOTERS**

Please read the following before marking your ballot:

1. Use **ONLY** a pencil or ink pen (black or blue) to mark your ballot. Do not use red ink.
2. Completely fill in oval to the right of each of your selections.  
**MARK BALLOT LIKE THIS:**  
 JOHN DOE → ●
3. To write-in a name, find the office in which you want to write-in . Darken the oval by the words "write-in" under that office. Write the name of the person for which you wish to vote on the blank line. You may not write-in any name that is printed on the ballot.
4. If you tear, deface or incorrectly mark this ballot, return it to the Cape May County Clerk and obtain a new ballot.

**GOVERNOR**

FOUR YEAR TERM (VOTE FOR ONE)

**TROY WEBSTER** → ○  
DEMOCRATS FOR FORWARD PROGRESS

**BARBARA BUONO** → ○  
CAPE MAY COUNTY REGULAR DEMOCRATIC ORGANIZATION

WRITE-IN → ○

**MEMBER  
STATE SENATE**

FOUR YEAR TERM (VOTE FOR ONE)

**JEFF VAN DREW** → ○  
CAPE MAY COUNTY REGULAR DEMOCRATIC ORGANIZATION

WRITE-IN → ○

**MEMBER OF THE  
GENERAL ASSEMBLY**

TWO YEAR TERM (VOTE FOR TWO)

**NELSON ALBANO** → ○  
CAPE MAY COUNTY REGULAR DEMOCRATIC ORGANIZATION

**BOB ANDRZEJCZAK** → ○  
CAPE MAY COUNTY REGULAR DEMOCRATIC ORGANIZATION

WRITE-IN → ○

WRITE-IN → ○

**MEMBER BOARD OF  
CHOSEN FREEHOLDERS**

THREE YEAR TERM (VOTE FOR TWO)

No PETITION FILED

No PETITION FILED

WRITE-IN → ○

WRITE-IN → ○

**STATE COMMITTEE  
MALE**

FOUR YEAR TERM (VOTE FOR ONE)

No PETITION FILED

WRITE-IN → ○

**STATE COMMITTEE  
FEMALE**

FOUR YEAR TERM (VOTE FOR ONE)

No PETITION FILED

WRITE-IN → ○



**DEMOCRATIC MAIL-IN BALLOT**  
**OFFICIAL PRIMARY ELECTION • JUNE 4, 2013**  
**CAPE MAY COUNTY**  
**BOROUGH OF WEST WILDWOOD**

BALLOT  
 STYLE  
 49



*Rita Marie Fulginiti*

**RITA MARIE FULGINITI**  
 County Clerk

**To Protect Your Vote:**  
 IT IS AGAINST THE LAW FOR ANYONE EXCEPT YOU  
 THE VOTER TO MARK OR INSPECT THIS BALLOT.  
 However, a family member may assist you in doing so.

**IMPORTANT**  
**INSTRUCTIONS TO**  
**VOTERS**

Please read the following before marking your ballot:

1. Use **ONLY** a pencil or ink pen (black or blue) to mark your ballot. Do not use red ink.
2. Completely fill in oval to the right of each of your selections.  
**MARK BALLOT LIKE THIS:**  
 JOHN DOE → ●
3. To write-in a name, find the office in which you want to write-in . Darken the oval by the words "write-in" under that office. Write the name of the person for which you wish to vote on the blank line. You may not write-in any name that is printed on the ballot.
4. If you tear, deface or incorrectly mark this ballot, return it to the Cape May County Clerk and obtain a new ballot.

**GOVERNOR**

FOUR YEAR TERM (VOTE FOR ONE)

**TROY WEBSTER** → ○  
DEMOCRATS FOR FORWARD PROGRESS

**BARBARA BUONO** → ○  
CAPE MAY COUNTY REGULAR DEMOCRATIC ORGANIZATION

WRITE-IN → ○

**MEMBER  
 STATE SENATE**

FOUR YEAR TERM (VOTE FOR ONE)

**JEFF VAN DREW** → ○  
CAPE MAY COUNTY REGULAR DEMOCRATIC ORGANIZATION

WRITE-IN → ○

**MEMBER OF THE  
 GENERAL ASSEMBLY**

TWO YEAR TERM (VOTE FOR TWO)

**NELSON ALBANO** → ○  
CAPE MAY COUNTY REGULAR DEMOCRATIC ORGANIZATION

**BOB ANDRZEJCZAK** → ○  
CAPE MAY COUNTY REGULAR DEMOCRATIC ORGANIZATION

WRITE-IN → ○

WRITE-IN → ○

**MEMBER BOARD OF  
 CHOSEN FREEHOLDERS**

THREE YEAR TERM (VOTE FOR TWO)

No PETITION FILED

No PETITION FILED

WRITE-IN → ○

WRITE-IN → ○

**STATE COMMITTEE  
 MALE**

FOUR YEAR TERM (VOTE FOR ONE)

No PETITION FILED

WRITE-IN → ○

**STATE COMMITTEE  
 FEMALE**

FOUR YEAR TERM (VOTE FOR ONE)

No PETITION FILED

WRITE-IN → ○



**DEMOCRATIC MAIL-IN BALLOT**  
**OFFICIAL PRIMARY ELECTION • JUNE 4, 2013**  
**CAPE MAY COUNTY**  
**CITY OF WILDWOOD**

BALLOT  
 STYLE  
 50



*Rita Marie Fulginiti*

**RITA MARIE FULGINITI**  
 County Clerk

**To Protect Your Vote:**  
 IT IS AGAINST THE LAW FOR ANYONE EXCEPT YOU  
 THE VOTER TO MARK OR INSPECT THIS BALLOT.  
 However, a family member may assist you in doing so.

**IMPORTANT**  
**INSTRUCTIONS TO**  
**VOTERS**

Please read the following before marking your ballot:

1. Use **ONLY** a pencil or ink pen (black or blue) to mark your ballot. Do not use red ink.
2. Completely fill in oval to the right of each of your selections.  
 MARK BALLOT LIKE THIS:  
 JOHN DOE → ●
3. To write-in a name, find the office in which you want to write-in . Darken the oval by the words "write-in" under that office. Write the name of the person for which you wish to vote on the blank line. You may not write-in any name that is printed on the ballot.
4. If you tear, deface or incorrectly mark this ballot, return it to the Cape May County Clerk and obtain a new ballot.

**GOVERNOR**

FOUR YEAR TERM (VOTE FOR ONE)

**TROY WEBSTER** → ○  
DEMOCRATS FOR FORWARD PROGRESS

**BARBARA BUONO** → ○  
CAPE MAY COUNTY REGULAR DEMOCRATIC ORGANIZATION

WRITE-IN → ○

**MEMBER  
 STATE SENATE**

FOUR YEAR TERM (VOTE FOR ONE)

**JEFF VAN DREW** → ○  
CAPE MAY COUNTY REGULAR DEMOCRATIC ORGANIZATION

WRITE-IN → ○

**MEMBER OF THE  
 GENERAL ASSEMBLY**

TWO YEAR TERM (VOTE FOR TWO)

**NELSON ALBANO** → ○  
CAPE MAY COUNTY REGULAR DEMOCRATIC ORGANIZATION

**BOB ANDRZEJCZAK** → ○  
CAPE MAY COUNTY REGULAR DEMOCRATIC ORGANIZATION

WRITE-IN → ○

WRITE-IN → ○

**MEMBER BOARD OF  
 CHOSEN FREEHOLDERS**

THREE YEAR TERM (VOTE FOR TWO)

No PETITION FILED

No PETITION FILED

WRITE-IN → ○

WRITE-IN → ○

**STATE COMMITTEE  
 MALE**

FOUR YEAR TERM (VOTE FOR ONE)

No PETITION FILED

WRITE-IN → ○

**STATE COMMITTEE  
 FEMALE**

FOUR YEAR TERM (VOTE FOR ONE)

No PETITION FILED

WRITE-IN → ○



**DEMOCRATIC MAIL-IN BALLOT**  
**OFFICIAL PRIMARY ELECTION • JUNE 4, 2013**  
**CAPE MAY COUNTY**  
**BOROUGH OF WILDWOOD CREST**

BALLOT  
 STYLE  
 51  
 1 ● ● ●  
 2 ● 2 ● 2  
 4 ● ● 4  
 8 ● 8 ● 8  
 ● ● ● P

*Rita Marie Fulginiti*

**RITA MARIE FULGINITI**  
 County Clerk

**To Protect Your Vote:**  
 IT IS AGAINST THE LAW FOR ANYONE EXCEPT YOU  
 THE VOTER TO MARK OR INSPECT THIS BALLOT.  
 However, a family member may assist you in doing so.

**IMPORTANT**  
**INSTRUCTIONS TO**  
**VOTERS**

Please read the following before marking your ballot:

1. Use **ONLY** a pencil or ink pen (black or blue) to mark your ballot. Do not use red ink.
2. Completely fill in oval to the right of each of your selections.  
 MARK BALLOT LIKE THIS:  
 JOHN DOE → ●
3. To write-in a name, find the office in which you want to write-in . Darken the oval by the words "write-in" under that office. Write the name of the person for which you wish to vote on the blank line. You may not write-in any name that is printed on the ballot.
4. If you tear, deface or incorrectly mark this ballot, return it to the Cape May County Clerk and obtain a new ballot.

**GOVERNOR**

FOUR YEAR TERM (VOTE FOR ONE)

**TROY WEBSTER** → ○  
DEMOCRATS FOR FORWARD PROGRESS

**BARBARA BUONO** → ○  
CAPE MAY COUNTY REGULAR DEMOCRATIC ORGANIZATION

WRITE-IN → ○

**MEMBER  
 STATE SENATE**

FOUR YEAR TERM (VOTE FOR ONE)

**JEFF VAN DREW** → ○  
CAPE MAY COUNTY REGULAR DEMOCRATIC ORGANIZATION

WRITE-IN → ○

**MEMBER OF THE  
 GENERAL ASSEMBLY**

TWO YEAR TERM (VOTE FOR TWO)

**NELSON ALBANO** → ○  
CAPE MAY COUNTY REGULAR DEMOCRATIC ORGANIZATION

**BOB ANDRZEJCZAK** → ○  
CAPE MAY COUNTY REGULAR DEMOCRATIC ORGANIZATION

WRITE-IN → ○

WRITE-IN → ○

**MEMBER BOARD OF  
 CHOSEN FREEHOLDERS**

THREE YEAR TERM (VOTE FOR TWO)

No PETITION FILED

No PETITION FILED

WRITE-IN → ○

WRITE-IN → ○

**STATE COMMITTEE  
 MALE**

FOUR YEAR TERM (VOTE FOR ONE)

No PETITION FILED

WRITE-IN → ○

**STATE COMMITTEE  
 FEMALE**

FOUR YEAR TERM (VOTE FOR ONE)

No PETITION FILED

WRITE-IN → ○



**DEMOCRATIC MAIL-IN BALLOT**  
**OFFICIAL PRIMARY ELECTION • JUNE 4, 2013**  
**CAPE MAY COUNTY**  
**BOROUGH OF WOODBINE**

BALLOT  
 STYLE  
 52  
 1 ● 1  
 2 ● 2  
 4 ● 4  
 8 ● 8  
 ● ● P

*Rita Marie Fulginiti*

**RITA MARIE FULGINITI**  
 County Clerk

**To Protect Your Vote:**  
 IT IS AGAINST THE LAW FOR ANYONE EXCEPT YOU  
 THE VOTER TO MARK OR INSPECT THIS BALLOT.  
 However, a family member may assist you in doing so.

**IMPORTANT**  
**INSTRUCTIONS TO**  
**VOTERS**

Please read the following before marking your ballot:

1. Use **ONLY** a pencil or ink pen (black or blue) to mark your ballot. Do not use red ink.
2. Completely fill in oval to the right of each of your selections.  
 MARK BALLOT LIKE THIS:  
 JOHN DOE → ●
3. To write-in a name, find the office in which you want to write-in . Darken the oval by the words "write-in" under that office. Write the name of the person for which you wish to vote on the blank line. You may not write-in any name that is printed on the ballot.
4. If you tear, deface or incorrectly mark this ballot, return it to the Cape May County Clerk and obtain a new ballot.

**GOVERNOR**  
 FOUR YEAR TERM (VOTE FOR ONE)

**TROY WEBSTER** → ○  
DEMOCRATS FOR FORWARD PROGRESS

**BARBARA BUONO** → ○  
CAPE MAY COUNTY REGULAR DEMOCRATIC ORGANIZATION

WRITE-IN → ○

**MEMBER STATE SENATE**  
 FOUR YEAR TERM (VOTE FOR ONE)

**JEFF VAN DREW** → ○  
CAPE MAY COUNTY REGULAR DEMOCRATIC ORGANIZATION

WRITE-IN → ○

**MEMBER OF THE GENERAL ASSEMBLY**  
 TWO YEAR TERM (VOTE FOR TWO)

**NELSON ALBANO** → ○  
CAPE MAY COUNTY REGULAR DEMOCRATIC ORGANIZATION

**BOB ANDRZEJCZAK** → ○  
CAPE MAY COUNTY REGULAR DEMOCRATIC ORGANIZATION

WRITE-IN → ○

WRITE-IN → ○

**MEMBER BOARD OF CHOSEN FREEHOLDERS**  
 THREE YEAR TERM (VOTE FOR TWO)

No PETITION FILED

No PETITION FILED

WRITE-IN → ○

WRITE-IN → ○

**STATE COMMITTEE MALE**  
 FOUR YEAR TERM (VOTE FOR ONE)

No PETITION FILED

WRITE-IN → ○

**STATE COMMITTEE FEMALE**  
 FOUR YEAR TERM (VOTE FOR ONE)

No PETITION FILED

WRITE-IN → ○

**MEMBER OF BOROUGH COUNCIL**  
 THREE YEAR TERM (VOTE FOR ONE)

**JULIA HANKERSON** → ○  
CAPE MAY COUNTY REGULAR DEMOCRATIC ORGANIZATION

WRITE-IN → ○